



**India Meteorological Department  
(Ministry of Earth Sciences)**

**NATIONAL BULLETIN NO. 24 (ARB/03/2023)**

**TIME OF ISSUE:1645 HOURS IST**

**DATED: 23.10.2023**

**FROM: INDIA METEOROLOGICAL DEPARTMENT (FAX NO. 24643965/24699216/24623220)**

**TO: CONTROL ROOM, NDM, MINISTRY OF HOME AFFAIRS (FAX.NO. 23093750)**

**CONTROL ROOM NDMA (FAX.NO. 26701729)**

**CABINET SECRETARIAT (FAX.NO.23012284, 23018638)**

**PS TO HON'BLE MINISTER FOR S & T AND EARTH SCIENCES (FAX NO.23316745)**

**SECRETARY, MOES (FAX NO. 24629777)**

**H.Q. (INTEGRATED DEFENCE STAFF AND CDS) (FAX NO. 23005137/23005147)**

**DIRECTOR GENERAL, DOORDARSHAN (23385843)**

**DIRECTOR GENERAL, AIR (23421105, 23421219)**

**PIB MOES (FAX NO. 23389042)**

**UNI (FAX NO. 23355841)**

**D.G. NATIONAL DISASTER RESPONSE FORCE (NDRF) (FAX NO. 26105912, 2436 3260)**

**DIRECTOR, PUNCTUALITY, INDIAN RAILWAYS (FAX NO. 23388503)**

**ADMINISTRATOR, LAKSHADWEEP ISLANDS (FAX NO. 0413-262184)**

**CHIEF SECRETARY, KERALA (FAX NO. 0471-2327176)**

**CHIEF SECRETARY, KARNATAKA (FAX NO. 080-22258913)**

**CHIEF SECRETARY, GOA (FAX NO. 0832-2415201)**

**CHIEF SECRETARY, MAHARASHTRA (FAX NO. 022- 22028594)**

**CHIEF SECRETARY, GUJARAT (FAX NO. 079-23250305)**

**CHIEF SECRETARY, DAMAN & DIU (FAX NO. 0260-2230775)**

**CHIEF SECRETARY, DADRA & NAGAR HAVELI (FAX NO. 0260-2645466)**

**CHIEF SECRETARY, ODISHA (FAX NO. 0674-2536660)**

**CHIEF SECRETARY, WEST BENGAL (FAX NO. 033-22144328)**

**CHIEF SECRETARY, ANDHRA PRADESH (FAX NO. 0863-2441029, 08645-246600)**

**CHIEF SECRETARY, TAMIL NADU (FAX NO 044-25672304)**

**CHIEF SECRETARY, PUDUCHERRY (FAX NO 0413-2334145)**

**CHIEF SECRETARY, GOVT. OF TRIPURA (FAX NO. 0381-2414013, 2413200)**

**CHIEF SECRETARY, GOVT. OF MIZORAM (FAX NO. 0389-2322745, 2320588)**

**CHIEF SECRETARY, GOVT. OF MANIPUR (FAX NO. 0385-2452629)**

**CHIEF SECRETARY, GOVT. OF NAGALAND (FAX NO. 0370-2270057)**

**ADMINISTRATOR, ANDAMAN & NICOBAR ISLANDS (FAX NO. 03192- 232656)**

**Sub: (A) Very Severe Cyclonic Storm "Tej" (pronounced as Tej) over Westcentral Arabian Sea and (B) Deep Depression over Westcentral Bay of Bengal**

**(A) Very Severe Cyclonic Storm "Tej" (pronounced as Tej) over Westcentral Arabian Sea**

The Very Severe Cyclonic Storm "Tej" (pronounced as Tej) over Westcentral Arabian Sea continued to move northwestwards with a speed of 12 kmph during past 6 hours and lay centered at 1430 hours IST of today, the 23<sup>rd</sup> October over the same region, near latitude 15.1°N and longitude 52.8°E, about 250 km south-southwest of Salalah (Oman) and 130 km south-southeast of Al Ghaidah (Yemen).

It is very likely to continue to move northwestwards and cross Yemen coast close to Al-Ghaidah around early hours of 24<sup>th</sup> October as a **Very Severe Cyclonic Storm** with wind speed of 125-135 kmph gusting to 150 kmph.

**Forecast track and intensity are given below:**

<b>Date/Time(IST)</b>	<b>Position (Lat. °N/ long. °E)</b>	<b>Maximum sustained surface wind speed (Kmph)</b>	<b>Category of cyclonic disturbance</b>
23.10.23/1430	15.1/52.8	145-155 gusting to 170	Very Severe Cyclonic Storm
23.10.23/1730	15.3/52.6	135-145 gusting to 160	Very Severe Cyclonic Storm
23.10.23/2330	15.6/52.3	125-135 gusting to 150	Very Severe Cyclonic Storm
24.10.23/0530	15.9/51.9	90-100 gusting to 110	Severe Cyclonic Storm
24.10.23/1130	16.2/51.5	45-55 gusting to 65	Depression
24.10.23/1730	16.4/51.1	25-35 gusting to 45	Well Marked Low

**Warnings:**

**(i) Wind warning (warning graphics enclosed):**

• **Southwest Arabian Sea:**

**Squally wind** speed reaching **50-60 kmph gusting to 70 kmph** prevailing over the region is likely to decrease gradually from today evening.

• **Westcentral Arabian Sea:**

**Gale wind** speed reaching **145-155 kmph gusting to 170 kmph** is prevailing and is likely to decrease gradually becoming **135-145 kmph gusting to 160 kmph** by 23<sup>rd</sup> evening and **125-135 kmph gusting to 150 kmph** by early hours of 24<sup>th</sup> October. It would decrease rapidly after the landfall becoming **90-100 kmph gusting to 110 kmph** in the morning of 24<sup>th</sup> October and **Squally wind** speed reaching 45-55 kmph gusting to 65 kmph by evening. It would decrease gradually thereafter.

**(ii) Sea Condition**

• **Southwest Arabian Sea:**

**Very rough to rough** Sea conditions, prevailing over the region is likely to improve further from evening of 23<sup>rd</sup> October.

• **Westcentral Arabian Sea:**

**Phenomenal** sea condition is prevailing and will continue till early hours of 24<sup>th</sup> October. It would improve gradually thereafter becoming **high to very rough** by 24<sup>th</sup> morning and rough to very rough by evening of 24<sup>th</sup> October. Thereafter, it would improve gradually.

**(iii) Fishermen Warning (Graphics attached):**

Fishermen are advised not to venture into

- ❖ **Southwest Arabian Sea** till 24<sup>th</sup> October morning.
- ❖ **Westcentral Arabian Sea** till night of 24<sup>th</sup> October.

**(B) Deep Depression over Westcentral Bay of Bengal**

The Deep Depression over Westcentral Bay of Bengal moved north-northeastwards with a speed of 18 kmph during past 6 hours and lay centered at 1430 hours IST of today, the 23<sup>rd</sup> October over the same region, near latitude 17.9°N and longitude 87.2°E, about 270 km south-southeast of Paradip (Odisha), 410 km south of Digha (West Bengal) and 550 km south-southwest of Khepupara (Bangladesh).

It is likely to intensify into a **Cyclonic Storm** during next 3 hours. It is very likely to move nearly north-northeastwards and cross Bangladesh coast between Khepupara and Chittagong around evening of 25<sup>th</sup> October as a **Deep Depression**.

**Forecast track and intensity are given below:**

<b>Date/Time(IST)</b>	<b>Position (Lat. °N/ long. °E)</b>	<b>Maximum sustained surface wind speed (Kmph)</b>	<b>Category of cyclonic disturbance</b>
23.10.23/1430	17.9/87.2	55-65 gusting to 75	Deep Depression
23.10.23/1730	18.1/87.3	60-70 gusting to 80	Cyclonic Storm
23.10.23/2330	18.7/87.7	70-80 gusting to 90	Cyclonic Storm
24.10.23/0530	19.3/88.1	80-90 gusting to 100	Cyclonic Storm
24.10.23/1130	19.9/88.7	70-80 gusting to 90	Cyclonic Storm
24.10.23/2330	20.7/89.4	55-65 gusting to 75	Deep Depression
25.10.23/1130	21.5/90.0	50-60 gusting to 70	Deep Depression
25.10.23/2330	22.4/90.5	25-35 gusting to 45	Well Marked Low

**Warnings:**

**(i) Rainfall Warning**

**Manipur, Mizoram & Tripura and south Assam & Meghalaya:** Light to moderate rainfall at most places with isolated heavy rainfall over Mizoram and heavy to very rainfall over Tripura is likely on 23<sup>rd</sup> and 24<sup>th</sup> October. Isolated heavy rainfall is likely over the same region on 25<sup>th</sup> October. Rainfall intensity will decrease on 26<sup>th</sup> with light to moderate rainfall at a few places over the region.

Light to moderate rainfall is likely at many places over south Assam and eastern Meghalaya on 24<sup>th</sup> and 25<sup>th</sup> October with isolated heavy rainfall over south Assam.

**Coastal Districts of Odisha:** Light to moderate rainfall at most places is likely on 23<sup>rd</sup> and 24<sup>th</sup> October with isolate heavy rainfall over coastal areas of north Odisha on 23<sup>rd</sup> October.

**Coastal Districts of West Bengal:** Light to moderate rainfall at most places is likely on 23<sup>rd</sup> and 24<sup>th</sup> October with isolated heavy rainfall over coastal areas of West Bengal on 24<sup>th</sup> October.

**(ii) Wind warning (warning graphics enclosed):**

- **Westcentral Bay of Bengal:** Squally wind speed reaching **50-60 kmph gusting to 70 kmph** is prevailing and likely to increase becoming **55-65 kmph gusting to 75 kmph** from 23<sup>rd</sup> evening till 24<sup>th</sup> October morning. It is likely to decrease gradually from 24<sup>th</sup> noon becoming **squally wind** speed reaching **40-50 kmph gusting 60 kmph** by 24<sup>th</sup> evening.
- **Adjoining eastcentral Bay of Bengal:** Squally wind speed reaching **45-55 kmph gusting to 65 kmph** is likely to increase gradually becoming **50-60 kmph gusting to 70 kmph** on 24<sup>th</sup> and decrease from 25<sup>th</sup> onwards.
- **North Bay of Bengal:**  
Squally wind speed reaching **40-50 kmph gusting to 60 kmph** is prevailing and likely to become **50-60 kmph gusting to 70 kmph** from today evening. It would become **Gale wind** speed reaching **60-70 kmph gusting to 80 kmph** from 24<sup>th</sup> October morning and **80-90 kmph gusting 100 kmph** during 24<sup>th</sup> morning to noon. It would decrease gradually thereafter.
- **Along & off Odisha, West Bengal, Bangladesh and north Myanmar coasts:**  
Squally wind speed reaching **40-50 kmph gusting to 60 kmph** is likely from 23<sup>rd</sup> evening to 24<sup>th</sup> along & off Odisha coast. Squally wind speed reaching **40-50 kmph gusting to 60 kmph** is likely to commence along & off West Bengal, Bangladesh and North Myanmar coasts from 24<sup>th</sup> morning. It would gradually increase becoming **55-65 kmph gusting to 75 kmph** along & off Bangladesh coast, **50-60 kmph gusting to 70 kmph** along & off north Myanmar coast and **45-55 kmph gusting to 65** along & off west Bengal coast on 25<sup>th</sup> October.
- **Mizoram, Tripura, south Assam and Manipur:**  
Squally wind speed reaching **40-50 kmph gusting to 60 kmph** is likely to prevail over Mizoram and Tripura and Strong wind speed reaching **30-40 kmph gusting to 50 kmph** over south Assam & Manipur on 25<sup>th</sup> October.

**(iii) Sea Condition**

- **Westcentral Bay of Bengal: Rough to very rough sea condition** is prevailing and will continue till 25<sup>th</sup> October. It is likely to improve gradually thereafter.
- **Adjoining eastcentral Bay of Bengal: Moderate to rough sea condition** is prevailing and likely to continue till 24<sup>th</sup> October and **rough to very rough** on 25<sup>th</sup> October. It is likely to improve gradually thereafter.
- **North Bay of Bengal: Rough sea condition** is likely on 23<sup>rd</sup> and **Very rough to High** on 24<sup>th</sup> and very rough on 25<sup>th</sup> October.
- **Along & off Odisha, West Bengal, Bangladesh and north Myanmar coasts: Rough sea condition** is likely on 23<sup>rd</sup> and **rough to very rough** on 24<sup>th</sup> and 25<sup>th</sup> October.

**(iv) Fishermen Warning (Graphics attached):**

Fishermen are advised not to venture into

- ❖ **Adjoining eastcentral Bay of Bengal** from 23<sup>rd</sup> to 25<sup>th</sup> October.
- ❖ **Westcentral Bay of Bengal** till 24<sup>th</sup> October.
- ❖ **North Bay of Bengal and along & off Odisha, West Bengal, Bangladesh and north Myanmar coasts** during 23<sup>rd</sup> to 25<sup>th</sup> October.

**Both the systems are under continuous surveillance and the next bulletin will be issued at 2030 hours IST of today, the 23<sup>rd</sup> October, 2023.**

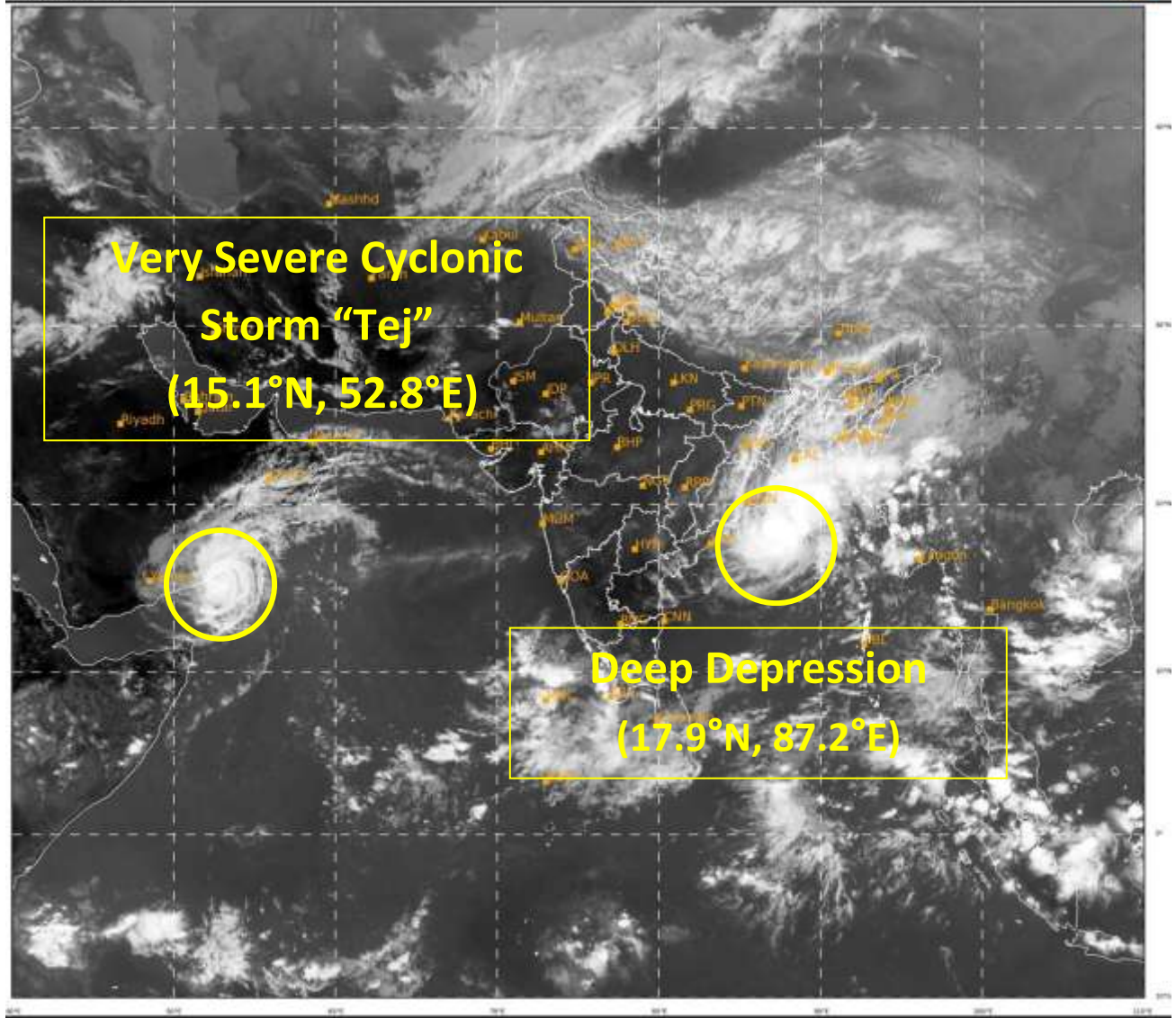
**(Ananda K Das)**

**Scientist F, Cyclone Warning Division, New Delhi**

*Copy to: ACWC Mumbai/ ACWC Chennai/ ACWC Kolkata/CWC Ahmedabad/CWC Bhubaneswar/CWC Vishakhapatnam/CWC Thiruvananthapuram/MC Goa*

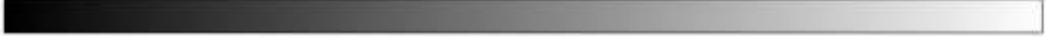
**Spatial rainfall distribution: Isolated: <25%, A few: 26-50%, Many: 51-75%, Most: 76-100%**

**Rainfall amount (mm): Heavy rain: 64.5 – 115.5, Very heavy rain: 115.6 – 204.4, Extremely heavy rain: 204.5 or more.**



300

936



IMD, DELHI



**OBSERVED AND FORECAST TRACK ALONGWITH CONE OF UNCERTAINTY OF VERY SEVERE CYCLONIC STORM "TEJ" OVER WESTCENTRAL ARABIAN SEA BASED ON 0600 UTC (1130 IST) OF 23<sup>RD</sup> OCTOBER 2023.**



DATE/TIME IN UTC  
 IST=UTC + 0530  
 L: LOW PRESSURE AREA  
 WML: WELL MARKED LOW PRESSURE AREA  
 D: DEPRESSION (17-27 KT)  
 DD: DEEP DEPRESSION (28-33 KT)  
 CS: CYCLONIC STORM (34-47 KT)  
 SCS: SEVERE CYCLONIC STORM (48-63KT)  
 VSCS: VERY SEVERE CYCLONIC STORM (64-89 KT)  
 ESCS: EXTREMELY SEVERE CYCLONIC STORM (90-119 KT)  
 SuCS: SUPER CYCLONIC STORM ( $\geq$  120 KT)

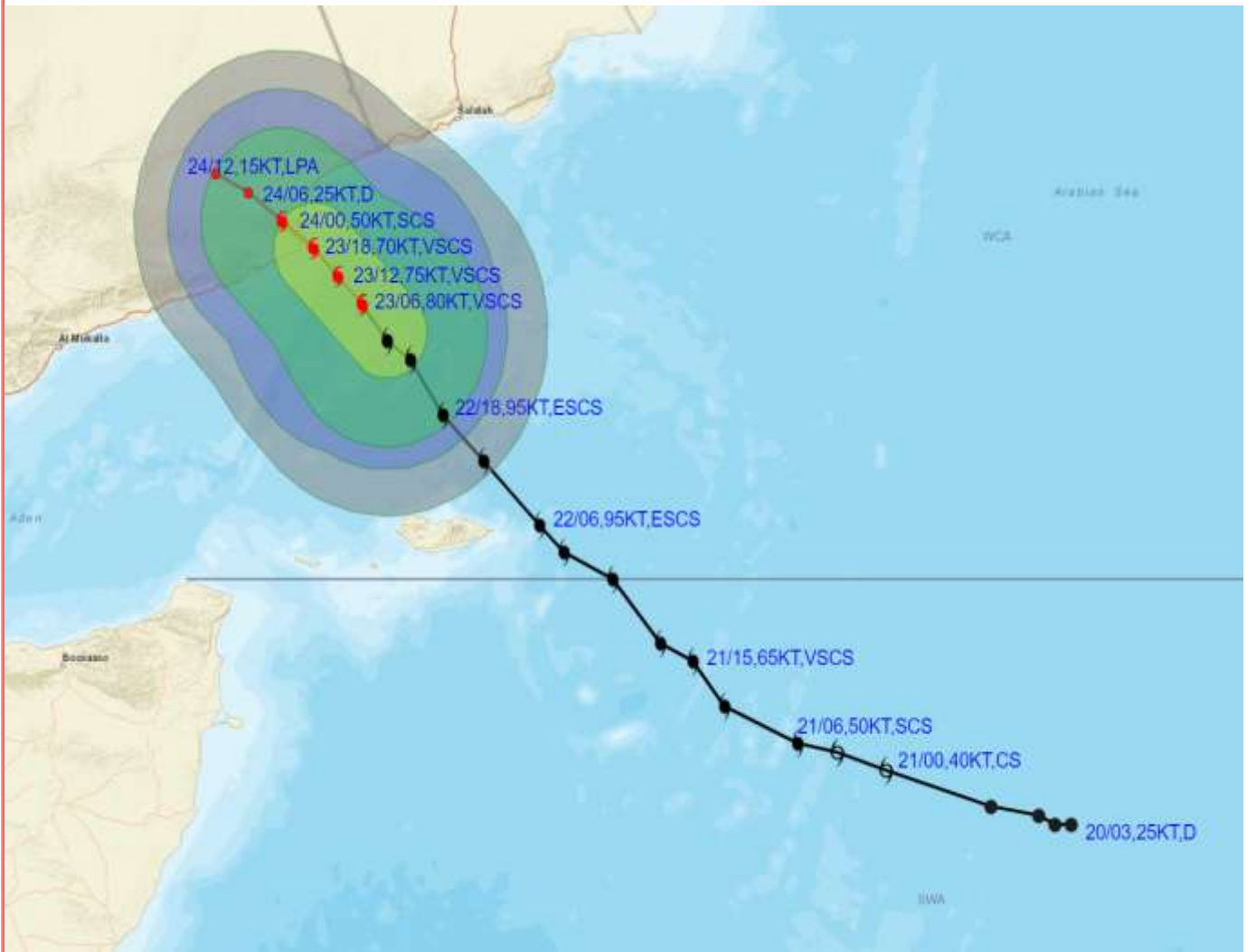
- LESS THAN 34 KT
- 34-47 KT
- $\geq$  48 KT
- OBSERVED TRACK
- FORECAST TRACK
- CONE OF UNCERTAINTY

Forecast	DISTANCE(KM) AND DIRECTION FROM STATIONS		
	SOCOTRA	SALALAH	AL-GHAIDAH
Date and Time			
24.10.23/0000	420, NNW	270, WSW	30, SW





**OBSERVED AND FORECAST TRACK ALONGWITH QUADRANT WIND DISTRIBUTION OF VERY SEVERE CYCLONIC STORM "TEJ" OVER WESTCENTRAL ARABIAN SEA BASED ON 0600 UTC (1130 IST) OF 23<sup>RD</sup> OCTOBER 2023.**



DATE/TIME IN UTC

IST=UTC + 0530

L: LOW PRESSURE AREA

WML: WELL MARKED LOW PRESSURE AREA

D: DEPRESSION (17-27 KT)

DD: DEEP DEPRESSION (28-33 KT)

CS: CYCLONIC STORM (34-47 KT)

SCS: SEVERE CYCLONIC STORM (48-63KT)

VSCS: VERY SEVERE CYCLONIC STORM (64-89 KT)

ESCS: EXTREMELY SEVERE CYCLONIC STORM (90-119 KT)

SuCS: SUPER CYCLONIC STORM ( $\geq$  120 KT)

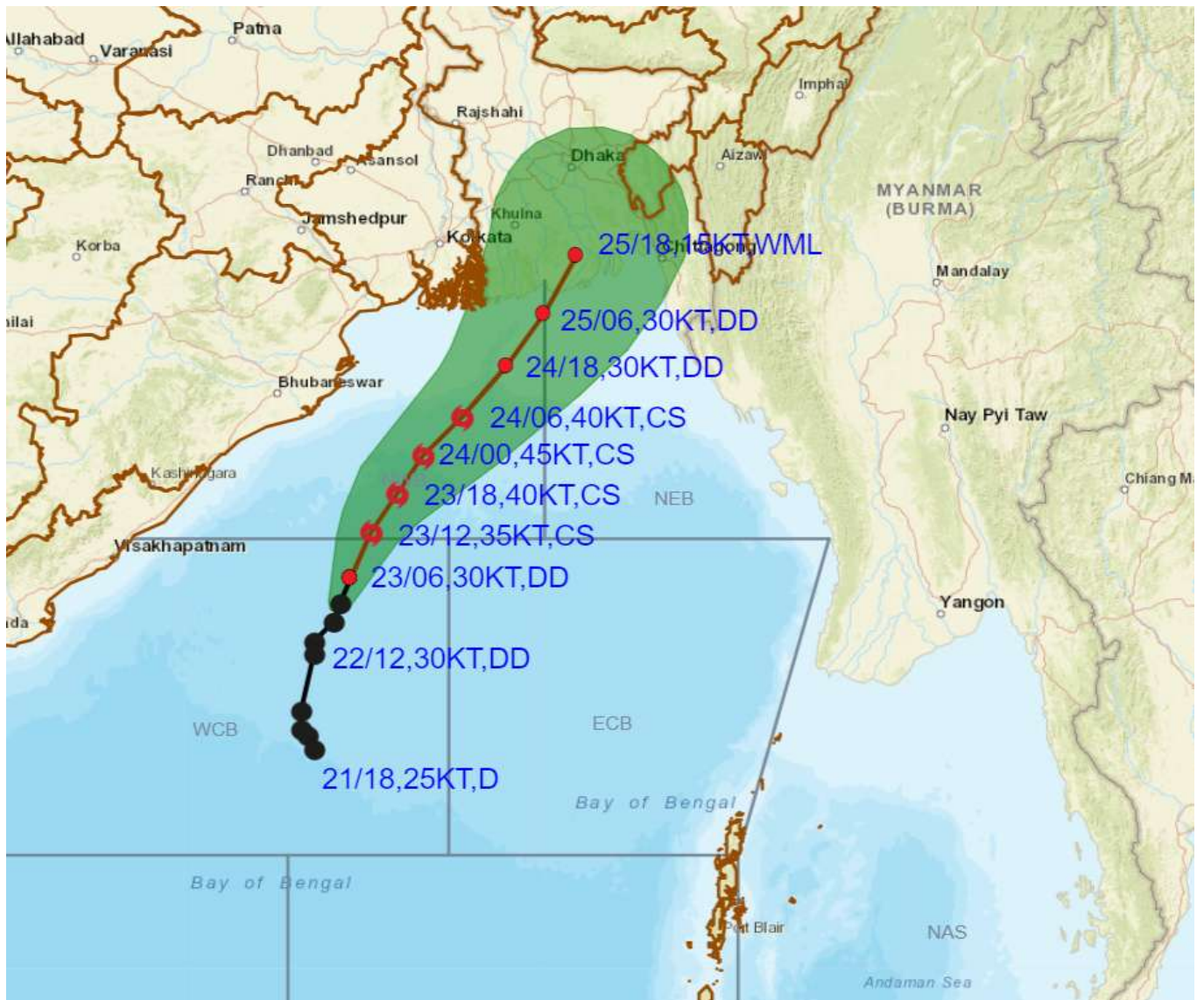
- LESS THAN 34 KT
  - 34-47 KT
  - $\geq$  48 KT
  - OBSERVED TRACK
  - FORECAST TRACK
  - ▲ CONE OF UNCERTAINTY
- AREA OF MAXIMUM SUSTAINED WIND SPEED:
- 28-33 KT (52-61 KMPH)
  - 34-49 KT (62-91 KMPH)
  - 50-63 KT (92-117 KMPH)
  - $\geq$  64 KT ( $\geq$ 118 KMPH)

**IMPACT OVER THE SEA**

MSW (knot/kmph)	Impact	Action
28-33 (52-61)	Very rough seas	Total suspension of fishing operations
34-49 (62-91)	High to very high seas	Total suspension of fishing operations
50-63 (92-117)	Very high seas	Total suspension of fishing operations
$\geq$ 64 ( $\geq$ 118)	Phenomenal	Total suspension of fishing operations



**OBSERVED AND FORECAST TRACK ALONGWITH CONE OF UNCERTAINTY OF DEEP DEPRESSION OVER WESTCENTRAL BAY OF BENGAL BASED ON 0600 UTC (1130 IST) OF 23<sup>RD</sup> OCTOBER 2023.**



DATE/TIME IN UTC

IST=UTC + 0530

L: LOW PRESSURE AREA

WML: WELL MARKED LOW PRESSURE AREA

D: DEPRESSION (17-27 KT)

DD: DEEP DEPRESSION (28-33 KT)

CS: CYCLONIC STORM (34-47 KT)

SCS: SEVERE CYCLONIC STORM (48-63KT)

VSCS: VERY SEVERE CYCLONIC STORM (64-89 KT)

ESCS: EXTREMELY SEVERE CYCLONIC STORM (90-119 KT)

SuCS: SUPER CYCLONIC STORM ( $\geq 120$  KT)

● LESS THAN 34 KT

○ 34-47 KT

○  $\geq 48$  KT

— OBSERVED TRACK

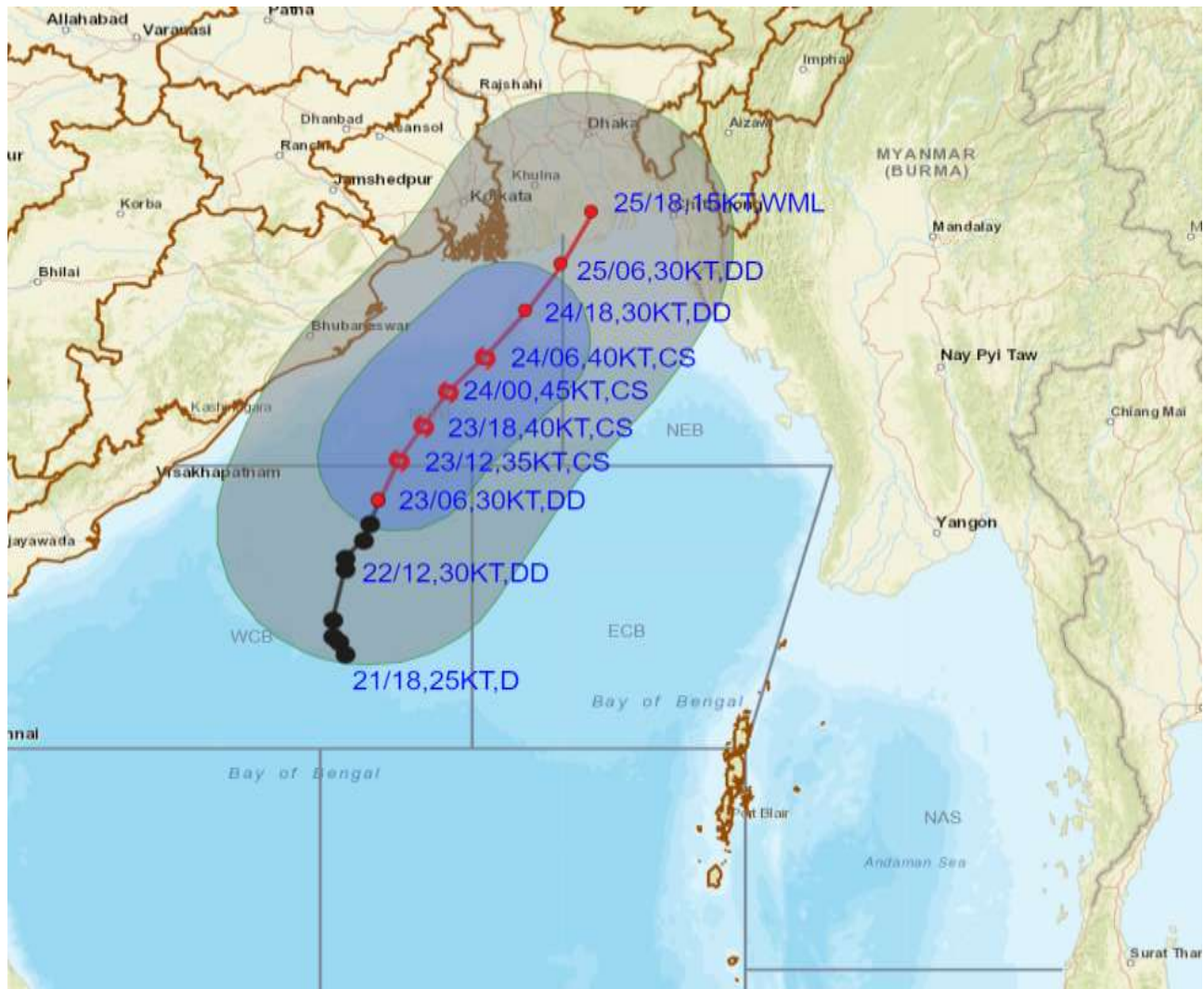
— FORECAST TRACK

▲ CONE OF UNCERTAINTY





**OBSERVED AND FORECAST TRACK ALONGWITH QUADRANT WIND DISTRIBUTION OF DEEP DEPRESSION OVER WESTCENTRAL BAY OF BENGAL BASED ON 0600 UTC (1130 IST) OF 23<sup>RD</sup> OCTOBER 2023.**



DATE/TIME IN UTC

IST=UTC + 0530

L: LOW PRESSURE AREA

WML: WELL MARKED LOW PRESSURE AREA

D: DEPRESSION (17-27 KT)

DD: DEEP DEPRESSION (28-33 KT)

CS: CYCLONIC STORM (34-47 KT)

SCS: SEVERE CYCLONIC STORM (48-63KT)

VSCS: VERY SEVERE CYCLONIC STORM (64-89 KT)

ESCS: EXTREMELY SEVERE CYCLONIC STORM (90-119 KT)

SuCS: SUPER CYCLONIC STORM (≥ 120 KT)

● LESS THAN 34 KT

○ 34-47 KT

● ≥ 48 KT

— OBSERVED TRACK

— FORECAST TRACK

— CONE OF UNCERTAINTY

AREA OF MAXIMUM SUSTAINED WIND SPEED:

— 28-33 KT (52-61 KMPH)

— 34-49 KT (62-91 KMPH)

— 50-63 KT (92-117 KMPH)

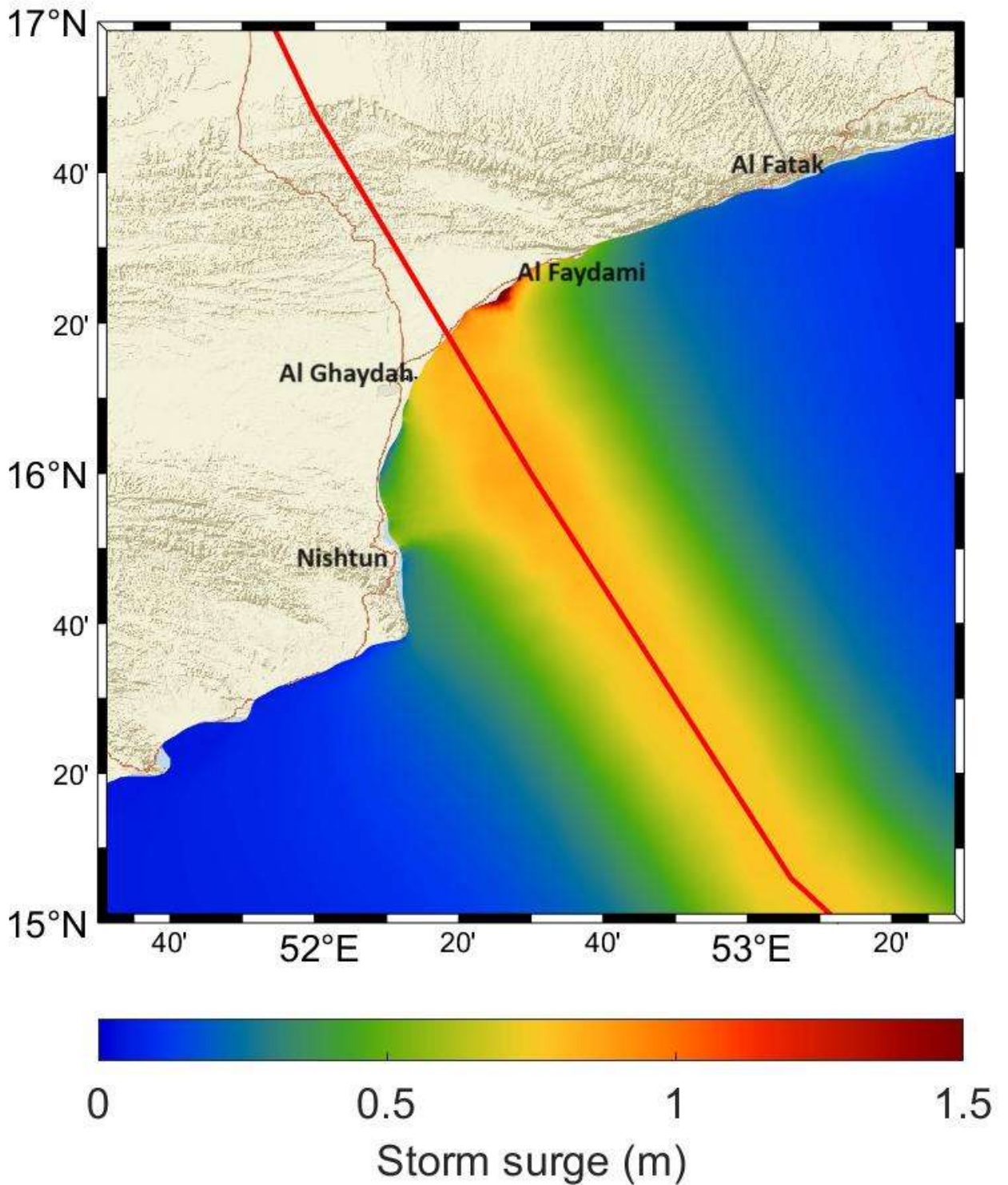
— ≥ 64 KT (≥118 KMPH)

**IMPACT OVER THE SEA**

MSW (knot/kmph)	Impact	Action
28-33 (52-61)	Very rough seas	Total suspension of fishing operations
34-49 (62-91)	High to very high seas	Total suspension of fishing operations
50-63 (92-117)	Very high seas	Total suspension of fishing operations
≥ 64 (≥118)	Phenomenal	Total suspension of fishing operations

**STORM SURGE GUIDANCE FOR YEMEN:**

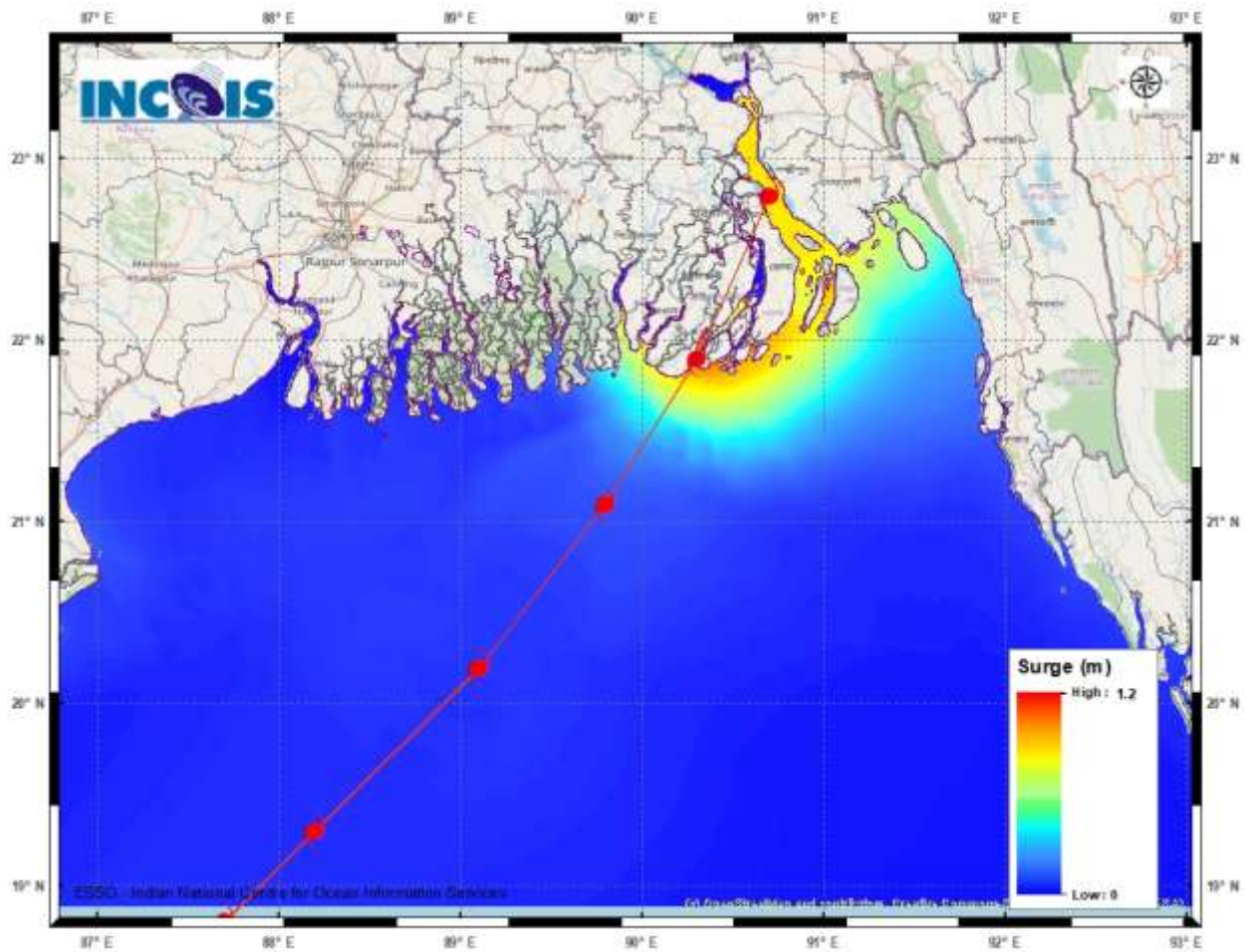
Storm surge of about 2 meter height above the astronomical tide is Likely to inundate low lying areas between al Ghaydah and al Faydami near the landfall point at the time of landfall.





## STORM SURGE GUIDANCE FOR BANGLADESH:

Storm surge of about 1.0-1.5 metre height above the astronomical tide is likely to inundate low lying areas between Khepupara and Chittagong (Bangladesh) around the time of landfall.



# WEATHER WARNING GRAPHICS



SUBDIVISIONWISE WEATHER WARNING FOR DAY 1  
( 23-10-2023 )



- |  |   |
|--|---|
| <ul style="list-style-type: none"> <li>● Heavy Rain</li> <li>⊖ Heavy Snow</li> <li>⚡ Thunderstorms &amp; Lightning</li> <li>☁ Haze/fog</li> <li>☄ Dust Storm</li> <li>⚡ Strong Surface Winds</li> <li>🌡 Heat Wave</li> <li>❄ Cold wave</li> <li>🌫 Fog</li> </ul> | <ul style="list-style-type: none"> <li>🟢 NO WARNING</li> <li>🟡 WATCH(BE UPDATED)</li> <li>🟠 ALERT (BE PREPARED)</li> <li>🔴 WARNING (TAKE ACTION)</li> </ul> |
|--|---|



SUBDIVISIONWISE WEATHER WARNING FOR DAY 2  
( 24-10-2023 )



- |  |   |
|--|---|
| <ul style="list-style-type: none"> <li>● Heavy Rain</li> <li>⊖ Heavy Snow</li> <li>⚡ Thunderstorms &amp; Lightning</li> <li>☁ Haze/fog</li> <li>☄ Dust Storm</li> <li>⚡ Strong Surface Winds</li> <li>🌡 Heat Wave</li> <li>❄ Cold wave</li> <li>🌫 Fog</li> </ul> | <ul style="list-style-type: none"> <li>🟢 NO WARNING</li> <li>🟡 WATCH(BE UPDATED)</li> <li>🟠 ALERT (BE PREPARED)</li> <li>🔴 WARNING (TAKE ACTION)</li> </ul> |
|--|---|



SUBDIVISIONWISE WEATHER WARNING FOR DAY 3  
( 25-10-2023 )



- |  |   |
|--|---|
| <ul style="list-style-type: none"> <li>● Heavy Rain</li> <li>⊖ Heavy Snow</li> <li>⚡ Thunderstorms &amp; Lightning</li> <li>☁ Haze/fog</li> <li>☄ Dust Storm</li> <li>⚡ Strong Surface Winds</li> <li>🌡 Heat Wave</li> <li>❄ Cold wave</li> <li>🌫 Fog</li> </ul> | <ul style="list-style-type: none"> <li>🟢 NO WARNING</li> <li>🟡 WATCH(BE UPDATED)</li> <li>🟠 ALERT (BE PREPARED)</li> <li>🔴 WARNING (TAKE ACTION)</li> </ul> |
|--|---|



SUBDIVISIONWISE WEATHER WARNING FOR DAY 4  
( 26-10-2023 )



- |  |   |
|--|---|
| <ul style="list-style-type: none"> <li>● Heavy Rain</li> <li>⊖ Heavy Snow</li> <li>⚡ Thunderstorms &amp; Lightning</li> <li>☁ Haze/fog</li> <li>☄ Dust Storm</li> <li>⚡ Strong Surface Winds</li> <li>🌡 Heat Wave</li> <li>❄ Cold wave</li> <li>🌫 Fog</li> </ul> | <ul style="list-style-type: none"> <li>🟢 NO WARNING</li> <li>🟡 WATCH(BE UPDATED)</li> <li>🟠 ALERT (BE PREPARED)</li> <li>🔴 WARNING (TAKE ACTION)</li> </ul> |
|--|---|



SUBDIVISIONWISE WEATHER WARNING FOR DAY 5  
( 27-10-2023 )



- |  |   |
|--|---|
| <ul style="list-style-type: none"> <li>● Heavy Rain</li> <li>⊖ Heavy Snow</li> <li>⚡ Thunderstorms &amp; Lightning</li> <li>☁ Haze/fog</li> <li>☄ Dust Storm</li> <li>⚡ Strong Surface Winds</li> <li>🌡 Heat Wave</li> <li>❄ Cold wave</li> <li>🌫 Fog</li> </ul> | <ul style="list-style-type: none"> <li>🟢 NO WARNING</li> <li>🟡 WATCH(BE UPDATED)</li> <li>🟠 ALERT (BE PREPARED)</li> <li>🔴 WARNING (TAKE ACTION)</li> </ul> |
|--|---|

- WATCH(BE UPDATED)
- ALERT (BE PREPARED)
- WARNING (TAKE ACTION)